

PART OF N.W. 1/4 SEC. 18, T. 5 N., R. 2 W., S.L.B. & M.

243

TRI-S VILLAGE ESTATES

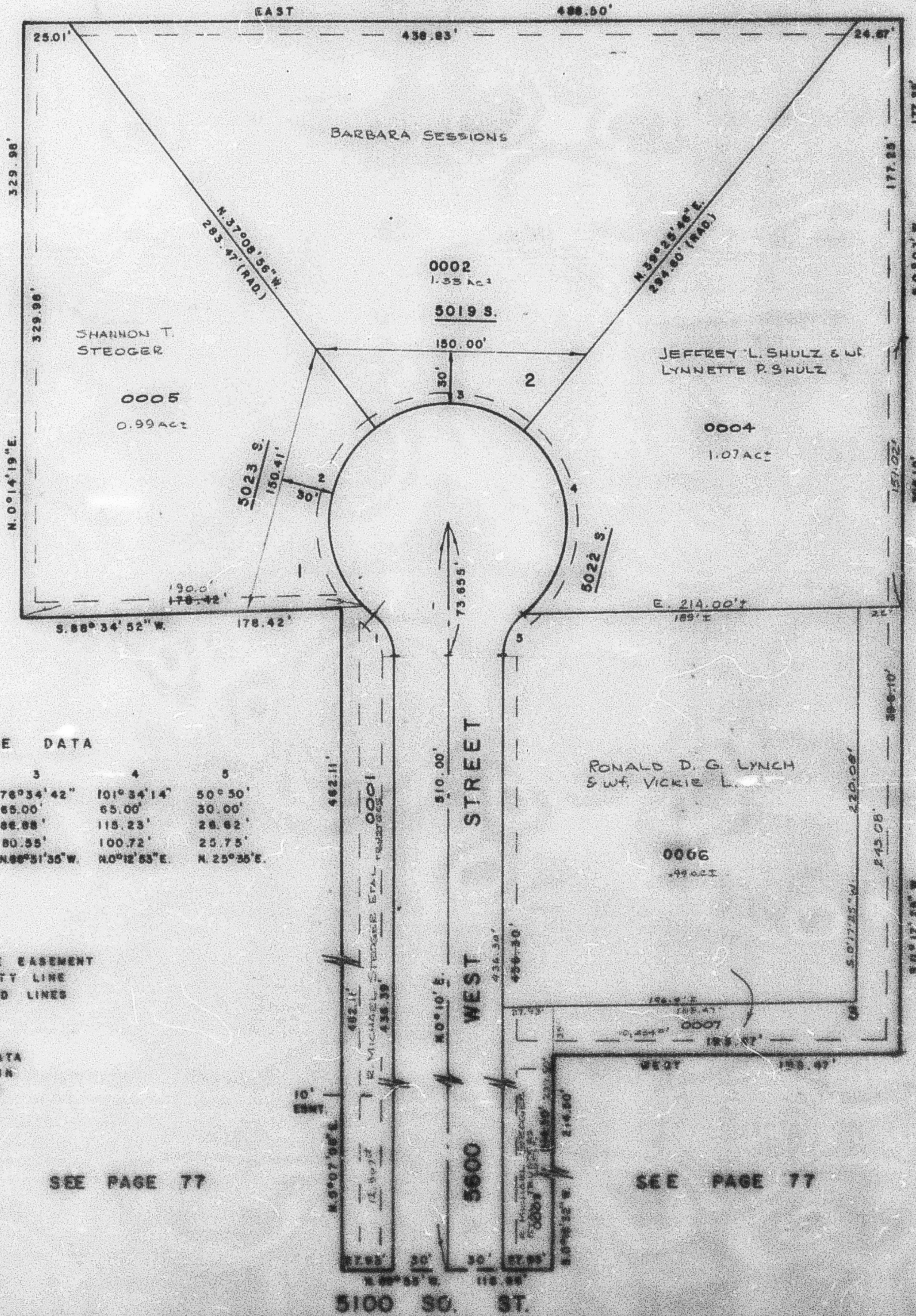
TAXING UNIT: 110

IN WEBER COUNTY

PREFIX: 09-243

SCALE 1" = 50'

SEE PAGE 77



SEE PAGE 77

SEE PAGE 77

CURVE DATA

1	2	3	4	5
A = 50°50'	102°31'04"	76°34'42"	101°34'14"	50°50'
R = 30.00'	65.00'	65.00'	65.00'	30.00'
L = 28.62'	117.44'	86.88'	115.23'	28.62'
LC = 25.75'	102.10'	80.55'	100.72'	25.75'
3.28°15'E.	3.1°05'32"W.	N.88°31'30"W.	N.0°12'53"E.	N. 25°35'E.

7' UTILITY & DRAINAGE EASEMENT EACH SIDE OF PROPERTY LINE AS INDICATED BY DASHED LINES

FOR COMPLETE ENG. DATA SEE ORIG. M.D. PLAN IN BOOK 24, PAGE 45

SEE PAGE 77

SEE PAGE 77